

  
**FESTINA**  
HANDBOOK

**2017**

**TIME TO LIVE**

BY GERARD BUTLER



3	FESTINA WORLD
5	THE POTENTIAL CONSUMER
6	THE WATCH SPECIFICATIONS
7	THE COLLECTIONS
47	THE CAMPAIGNS
50	SOCIAL NETWORKS
51	SHOP IN SHOP
53	GUARANTEE

**FESTINA** is the leading brand of the Festina Group. With over 100 years of high level watch making history Festina continues to excel around the world thanks to the quality and universal watch designs, which surpass passing styles or trends. Festina transmits values shared by all, regardless of culture or origin. Collective emotions and motivation ... such as its attraction. Something attractive attracts everywhere.

With an unquestionable prestige and all over the world Festina transcends fashion and sets trends for others to follow. Synonym with elegance, functionality, style and sporting spirit, Festina is the watch for those looking for convenience, reliability and outstanding quality for a good price.

Festina, since the beginning, has been closely linked to sports and sporting events such as cycling because the challenge in sport is also universal. But now the brand is moving into a more fashion positioning thanks to its new testimonial: Gerard Butler. The famous Hollywood actor is the new ambassador for Festina watches.

VALUE FOR MONEY

TRADITION (WATCHES SINCE 1902)

QUALITY AS FIRST PRIORITY

TECHNOLOGY AND INNOVATION

EUROPEAN DESIGN

## FESTINA TARGET

Adults from 30 years on

THERE ARE TWO FESTINA WORLDS WITH DIFFERENT POSITIONING:

**MEN**  
**SPORT / CLASSIC**



**WOMEN**  
**CLASSIC/ LIFESTYLE**



### The Festina man is ....

... a modern, urban man between 35 and 65 years old. He is active and sports-minded. He is successful and passionate about his work and sports and his hobbies .

He is self-confident and mature. He is sociable and likes to spend time with his friends and his family. He wants to be different from others by his accessories but doesn't follow the latest fashion trends.

He seeks for a reliable product with outstanding quality that can keep up with his demanding lifestyle. He cares about good design but for a fair price. He likes Festina for its connection to sport and its value for money.

### The Festina woman is ....

... a modern woman between 35 and 65 years old. She is independent and works at home or in a company. She likes to go out with her friends or look after her family. She has her own hobbies and she makes the most of life.

She likes fashion but she's not following the latest fashion trends. She understands fashion in a very personal way.

She wants a good quality & well designed watch at an affordable price. She is an urban woman who likes Festina because of its reputation.



## STAINLESS STEEL 316L WATCHES

Quartz movement

3 hands, Date, Multifunction, Chronographs models

Stainless steel and ceramic cases

IP plated –gold, rosé or chocolate – details on bracelets, hands, index.

Super Slim case

Bracelets in stainless steel, ceramic, rubber, leather, milanese

Mineral crystal

Sapphire glass in some exclusive models

Zircons (in some woman specific models)

Dials created with Swarovski® crystals





## CHRONO BIKE

This yearly collection inspired by cycling world is one of the most iconic of the brand. This best seller chronograph collection is designed taking into account the bicycle elements. A high quality collection with a very sportive look.

## CHRONOGRAPH (Sport, Classic)

Festina is famous thanks to its chronographs technique. The brand offers a wide range of chronos that fulfill different styles: the classic and the sport.



## PRESTIGE

The new collection for man plays with the tones. Combining two tones to give a more fashion flair to the watches and available as chronograph or 2 hands. Fashion is at your disposal.

## RETRO

Different options for different people. The multifunction collection includes watches with bracelets in rubber, leather or full stainless steel. Case sizes range from 42 to 47mm. The perfect tool to mark your time.



## SLIM

Since 2010 the ceramic line for ladies shows design combining elegance, style and the latest trends. A wide selection of models to suit all tastes. The collection includes 3hand and multifunction models in different tones. Enjoy the ceramic power.

## BOYFRIEND

A big watch collection designed for her. For women who loves the boyfriend look trend. Available in different tones from steel, golden, rosé or chocolate including some vibrant colours.



## MADEMOISELLE

Is the latest ladies collection from Festina. Up-to-date watches that combine different IP plating tones from gold, silver or rosé. The usage of zircons and mother of pearl on dials, helps this collection being the perfect feminine accessory.

## EXTRA

Festina has re-edited one of its most symbolic collections: the legendary Extra collection. We have revived some models from 1948, showing that unique creations with timeless designs defy the passing of time.



## MADEMOISELLE Created with Swarovski® crystals

This glamorous collection includes watches with Stainless steel case and Swarovski® crystals on the dial. Available with Stainless steel bracelet or mesh strap.

**CHRONO BIKE**



F20327/1

**F 20327/1**

Men's chronograph

316L Stainless steel

Case diameter: 44mm

Mineral glass

Stainless steel bracelet 26.21 mm.

10 ATM

Special box with additional rubber strap





CHRONO BIKE



F20327/2



F20327/3



F20327/4



F20327/5



F20327/6



F20327/7



F20327/8



CHRONO BIKE SPECIAL EDITION



## F20329/1

### Special Edition

---

Men's chronograph

---

316L Stainless steel with black and rose gold IP treatment

---

Case diameter: 44mm

---

Sapphire crystal

---

Stainless steel bracelet with black IP treatment - 26.21 mm.

---

10 ATM

---

Special box with additional rubber strap and a tool to exchange it

---

MEN - CHRONOGRAPH



F20202/1



F20202/2

F20202/3

F20202/4

**F20202**

Chronograph

Stainless steel

Case: 43.50 mm

5 ATM



F20271/1



F20271/2

F20271/3

F20271/4

F20271/5

F20271/6

**F20271**

Chronograph

Stainless steel

Case: 43.50 mm

5 ATM



F20264/1



F20264/2

F20264/3

F20264/4

**F20264**

Chronograph

Stainless steel

Case: 40X 39mm

5 ATM

MEN - CHRONOGRAPH



F20265/1



F20265/2

F20265/3

F20265/4

**F20265**

---

Chronograph

---

Stainless steel

---

Case: 40X39 mm

---

5 ATM

---

MEN - CHRONOGRAPH

FALL  
2017



F6863/1

**F6863**



F6863/2

F6863/3

F6863/4

Chronograph  
Stainless steel  
Case: 45 mm  
10 ATM

FALL  
2017



F6864/1

**F6864**



F6864/2

F6864/3

F6864/4

F6864/5

F6864/6

Chronograph  
Stainless steel  
Case: 43 mm  
10 ATM

FALL  
2017



F6865/1

**F6865**



F6865/2

F6865/3

F6865/4

Chronograph  
Stainless steel  
Case: 45mm  
10 ATM

MEN - CHRONOGRAPH

FALL  
2017



F20280/1

**F20280**



F20280/2      F20280/3      F20280/4

Chronograph  
Stainless steel  
Case: 41.50 mm  
5 ATM  
Leather strap

FALL  
2017



F20284/1

**F20284**



F20284/2      F20284/3      F20284/4

Chronograph  
Stainless steel  
Case: 43 mm  
5 ATM  
Leather strap

FALL  
2017



F20285/1

**F20285**



F20285/2      F20285/3      F20285/4

Chronograph  
Stainless steel  
Case: 41.50 mm  
5 ATM

MEN - CHRONOGRAPH

FALL  
2017



F20286/1



F20286/2

F20286/3

F20286/4

**F20286**

Chronograph  
Stainless steel  
Case: 41.50 mm  
5 ATM  
Leather strap

FALL  
2017



F6861/1



F6861/2

F6861/3

F6861/4

**F6861**

Chronograph  
Stainless steel  
Case: 45 mm  
10 ATM

FALL  
2017



F6862/1



F6862/2

F6862/3

F6862/4

**F6862**

Chronograph  
Stainless steel  
Case: 44 mm  
10 ATM

MEN - PRESTIGE



F20266/1

**F20266**



F20266/2

F20266/3

Chronograph  
 Stainless steel with gold IP treatment  
 Case: 43.50 mm  
 5 ATM



F20267/1

**F20267**



F20267/2

F20267/3

Chronograph  
 Stainless steel with gold IP treatment  
 Case: 42.30 mm  
 10 ATM



F20268/1

**F20268**



F20268/2

F20268/3

Chronograph  
 Stainless steel with gold IP treatment  
 Case: 42.30 mm  
 10 ATM  
 Leather strap



MEN - PRESTIGE



F20269/2

**F20269**

F20269/3

Chronograph  
 Stainless steel with gold IP treatment  
 Case: 43 mm  
 10 ATM



F20270/2

**F20270**

F20270/3

Chronograph  
 Stainless steel with gold IP treatment  
 Case: 43 mm  
 10 ATM  
 Leather strap



MEN - THE ORIGINALS



F20330/1



F20330/2

F20330/3

F20330/4

F20330/5

F20330/6

**F20330**

Chronograph  
 Stainless steel  
 Case: 47 mm  
 10 ATM



F20339/1



F20339/2

F20339/3

F20339/4

F20339/5

F20339/6

**F20339**

Chronograph  
 Stainless steel  
 Case: 44,8mm  
 5 ATM

MEN- RETRO



F16981/1



F16981/2

F16981/3

F16981/4

**F16981**

3- hands

Stainless steel

Case: 41 mm

5 ATM



F16982/1



F16982/2

F16982/3

F16982/4

**F16982**

3- hands

Stainless steel

Case: 41 mm

5 ATM

Leather strap



F20204/1



F20204/2

F20204/3

F20204/4

**F20204**

3- hands

Stainless steel

Case: 41mm

5 ATM

MEN- RETRO



F20205/1



F20205/2

F20205/3

F20205 /4

**F20205**

---

3- hands

---

Stainless steel

---

Case: 41 mm

---

5 ATM

---

Leather strap

---

MEN RETRO

FALL  
2017



F20276/1

**F20276**



F20276/2

F20276/3

F20276/4

2-hands / Second /Date

Stainless steel

Case: 41 mm

5 ATM

FALL  
2017



F20277/1

**F20277**



F20277/2

F20277/3

F20277/4

2-hands / Second /Date

Stainless steel

Case: 41 mm

5 ATM

Leather strap

MEN RETRO

FALL  
2017



F20278/1

**F20278**



F20278/2

F20278/3

F20278/4

Multifunction

Stainless steel

Case: 41.50 mm

3 ATM

Leather strap

FALL  
2017



F20279/1

**F20279**



F20279/2

F20279/3

F20279/4

Multifunction

Stainless steel with gold IP treatment

Case: 41.50 mm

3 ATM

Leather strap

MEN- RETRO

FALL  
2017



F6859/1



F6859/2

**F6859**

2-hands / second  
Stainless steel  
Case: 42 mm  
5 ATM

FALL  
2017



F6860/1



F6860/2

F6860/3

F6860/4

**F6860**

Multifunction  
Stainless steel  
Case: 41.50 mm  
3 ATM  
Leather strap

FALL  
2017



F6858/1



F6858/2

F6858/3

**F6858**

Automatic  
Stainless steel  
Case: 41.50 mm  
5 ATM  
Leather strap

MULTIFUNCTION



F16243/A



F16243/B

F16243/C

F16243/D

**F16243**

---

Multifunction

---

Stainless steel

---

Case: 40 mm

---

10 ATM

---



EXTRA



F20248/1

**F20248**



F20248/2

F20248/3

F20248/4

2 - Hands / Second

Stainless steel

Case: 36 mm

3 ATM

Leather strap



F20249/1

**F20249**



F20249/2

F20249/3

F20249/4

2 - Hands / Second

Stainless steel with gold IP treatment

Case: 36 mm

3 ATM

Leather strap



F20250/1

**F20250**



F20250/2

F20250/3

F20250/4

2 - Hands / Second

Stainless steel

Case: 36 mm

3 ATM

EXTRA



F20251/1

**F20251**



F20251/2

F20251/3

F20251/4

2 - Hands / Second

Stainless steel with gold IP treatment

Case: 36mm

3 ATM



F20252/1

**F20252**



F20252/2

F20252/3

F20252/4

2 - Hands / Second

Stainless steel

Case: 36 mm

3 ATM

Mesh strap



F20253/1

**F20253**



F20253/2

2 - Hands / Second

Stainless steel with gold IP treatment

Case: 36 mm

3 ATM

Mesh strap

EXTRA



F20254/1

**F20254**



F20254/2

F20254/3

F20254/4

2 - Hands / Second

Stainless steel

Case: 29 mm

3 ATM

Leather strap



F20255/1

**F20255**



F20255/2

F20255/3

2 - Hands / Second

Stainless steel with gold IP treatment

Case: 29 mm

3 ATM

Leather strap



F20256/1

**F20256**



F20256/2

F20256/3

F20256/4

2 - Hands / Second

Stainless steel

Case: 29 mm

3 ATM

EXTRA



F20257/1

**F20257**



F20257/2

2 - Hands / Second  
 Stainless steel with gold IP treatment  
 Case: 29 mm  
 3 ATM



F20258/1

**F20258**



F20258/2

F20258/3

2 - Hands / Second  
 Stainless steel  
 Case: 29 mm  
 3 ATM  
 Mesh strap



F20259/1

**F20259**



F20259/2

2 - Hands / Second  
 Stainless steel with gold IP treatment  
 Case: 29 mm  
 3 ATM  
 Mesh strap

EXTRA



F20260/1

**F20260**

F20260/2

- \_\_\_\_\_
- 2 - Hands
- \_\_\_\_\_
- Stainless steel
- \_\_\_\_\_
- Case: 20 mm
- \_\_\_\_\_
- 3 ATM
- \_\_\_\_\_
- Leather strap
- \_\_\_\_\_



F20261/1

**F20261**

F20261/2

- \_\_\_\_\_
- 2 - Hands
- \_\_\_\_\_
- Stainless steel with gold IP treatment
- \_\_\_\_\_
- Case: 20 mm
- \_\_\_\_\_
- 3 ATM
- \_\_\_\_\_
- Leather strap
- \_\_\_\_\_



F20262/1

**F20262**

F20262/2

- \_\_\_\_\_
- 2 - Hands
- \_\_\_\_\_
- Stainless steel
- \_\_\_\_\_
- Case: 20 mm
- \_\_\_\_\_
- 3 ATM
- \_\_\_\_\_



EXTRA



F20263/1



F20263/2

**F20263**

---

2- Hands

---

Stainless steel with gold IP treatment

---

Case: 20 mm

---

3 ATM

---

COUPLE WATCH MAN



F20244/1

**F20244**



F20244/2

F20244/3

2 Hands

Stainless steel

Case: 39 mm

5 ATM

Slim case



F20245/1

**F20245**



F20245/2

F20245/3

2 Hands

Stainless steel with gold IP treatment

Case: 39 mm

5 ATM

Slim case

COUPLE WATCH WOMAN



F20226/1

**F20226**

F20226/2

F20226/3

F20226/4

2 Hands

Stainless steel with gold /rose IP treatment

Zircons in bezel

Case: 29 mm

5 ATM

Slim case



F20225/2



F20225/1

**F20225**

2 Hands

Stainless steel

Zircons in bezel

Case: 29 mm

5 ATM

Slim case



**MADEMOISELLE** Created with Swarovski® crystals



F20331/1

**F20331**



F20331/2

F20331/3

- 3-hands
- Stainless steel
- Case: 32 mm
- 5 ATM
- Mesh strap
- Dial with Swarovski® crystals



F20332/1

**F20332**

- 3-hands
- Stainless steel with gold IP treatment
- Case: 32 mm
- 5 ATM
- Mesh strap
- Dial with Swarovski® crystals



F20333/1

**F20333**



F20333/2

- 3-hands
- Stainless steel with rose gold IP treatment
- Case: 32 mm
- 5 ATM
- Mesh strap
- Dial with Swarovski® crystals

**MADEMOISELLE** Created with Swarovski® crystals



F20334/1

**F20334**



F20334/2

F20334/3

3-hands

Stainless steel

Case: 32 mm

5 ATM

Leather strap

Dial with Swarovski® crystals



F20335/1

**F20335**

3-hands

Stainless steel with gold IP treatment

Case: 32 mm

5 ATM

Leather strap

Dial with Swarovski® crystals

**MADEMOISELLE** Created with Swarovski® crystals



F20336/1

**F20336**



F20336/2

F20336/3

- 3-hands

---

- Stainless steel

---

- Case: 31.80 mm

---

- 5 ATM

---

- Mesh strap

---

- Dial with Swarovski® crystals

---




F20337/1

**F20337**



F20337/2

- 3-hands

---

- Stainless steel with gold IP treatment

---

- Case: 31.80 mm

---

- 5 ATM

---

- Mesh strap

---

- Dial with Swarovski® crystals

---




F20338/1

**F20338**



F20338/2

F20338/3

- 3-hands

---

- Stainless steel with rose gold IP treatment

---

- Case: 31.80 mm

---

- 5 ATM

---

- Mesh strap

---

- Dial with Swarovski® crystals

---

MADEMOISELLE



F20212/1

**F20212**



F20212/ 2

F20212/ 3

F20212/4

3 - Hands

Stainless steel

Case: 30.50 mm

5 ATM



F20213/1

**F20213**



F20213/2

3 - Hands

Stainless steel with gold/ rose IP treatment

Case: 30.50 mm

5 ATM



F20214/1

**F20214**

3 - Hands

Stainless steel with gold IP treatment

Case: 30.50 mm

5 ATM

MADEMOISELLE



F20215/1

**F20215**

3 - Hands
Stainless steel with rose IP treatment
Case: 30.50 mm
5 ATM



F20216/1

**F20216**

3 - Hands
Stainless steel
Case: 28.50 mm
5 ATM



F20216/2



F20217/1

**F20217**

3 - Hands
Stainless steel with gold/ rose IP treatment
Case: 28.50 mm
5 ATM



F20217/2

MADEMOISELLE



F20218/1

**F20218**

F20218/2



- \_\_\_\_\_
- 3- Hands
- \_\_\_\_\_
- Stainless steel
- \_\_\_\_\_
- Case: 28,50 mm
- \_\_\_\_\_
- 5 ATM
- \_\_\_\_\_
- Zircons in bezel
- \_\_\_\_\_



F20219/1

**F20219**

F20219/2



- \_\_\_\_\_
- 3- Hands
- \_\_\_\_\_
- Stainless steel with gold / rose IP treatment
- \_\_\_\_\_
- Case: 28,50 mm
- \_\_\_\_\_
- 5 ATM
- \_\_\_\_\_
- Zircons in bezel
- \_\_\_\_\_



F20220/1

**F20220**

F20220/2



- \_\_\_\_\_
- 3- Hands
- \_\_\_\_\_
- Stainless steel
- \_\_\_\_\_
- Case: 30 mm
- \_\_\_\_\_
- 5 ATM
- \_\_\_\_\_
- Zircons in bezel
- \_\_\_\_\_

MADEMOISELLE



F20221/1

**F20221**

---

3- Hands

---

Stainless steel with rose IP treatment

---

Case: 30 mm

---

5 ATM

---

Zircons in bezel

---



F20222/1

**F20222**

---

3- Hands

---

Stainless steel with rose IP treatment

---

Case: 30 mm

---

5 ATM

---

Zircons in bezel

---



F20223/1

**F20223**

---

3- Hands

---

Stainless steel

---

Case: 31 mm

---

5 ATM

---

Zircons in bezel

---



F20223/2

MADEMOISELLE



F20224/1

**F20224**



F20224/2

3 - Hands

Stainless steel with golden / rose IP treatment

Case: 31 mm

5 ATM

Zircons in bezel



F20240/1

**F20240**



F20240/2

F20240/3

3 - Hands

Stainless steel

Case: 28.50 mm

5 ATM

Zircons in bezel



F20241/1

**F20241**



F20241/2

3 - Hands

Stainless steel with gold/rose IP treatment

Case: 28.50 mm

5 ATM

Zircons in bezel



MADEMOISELLE



F20242/1

**F20242**

3 - Hands

Stainless steel with rose IP treatment

Case: 28.50 mm

5 ATM

Zircons in bezel



F16950/A

**F16950**

3 - Hands

Stainless steel

Mesh strap

Case: 32 mm

5 ATM



F16950/B

F16950/C

F16950/D

MADEMOISELLE



F20307/1

**F20307**



F20307/2

2-hands

Stainless steel

Case: 29 mm

5 ATM

Zircons



F20308/1

**F20308**



F20308/2

2-hands

Stainless steel with gold /rose IP treatment

Case: 29 mm

5 ATM

Zircons

MADEMOISELLE



F20311/1

**F20311**



F20311/2

3-hands  
Stainless steel  
Case: 28 mm  
5 ATM



F20312/1

**F20312**



F20312/2

3-hands  
Stainless steel with gold /rose IP treatment  
Case: 28 mm  
5 ATM



F20313/1

**F20313**

3-hands  
Stainless steel with gold IP treatment  
Case: 28 mm  
5 ATM

MADEMOISELLE

FALL  
2017



F20314/1

**F20314**

3-hands

Stainless steel with rose gold IP treatment

Case: 28mm

5 ATM

FALL  
2017



F20315/1

**F20315**

3-hands

Stainless steel

Case: 28,5 mm

5 ATM



F20315/2

FALL  
2017



F20316/1

**F20316**

3-hands

Stainless steel with gold /rose IP treatment

Case: 28,5 mm

5 ATM



F20316/2

MADEMOISELLE

FALL  
2017



F20317/1

**F20317**

---

3-hands

---

Stainless steel with gold IP treatment

---

Case: 28,5 mm

---

5 ATM

---

FALL  
2017



F20318/1

**F20318**

---

3-hands

---

Stainless steel with rose gold IP treatment

---

Case: 28,5 mm

---

5 ATM

---

MADEMOISELLE



F20319/1

**F20319**

2 -hands

Stainless steel

Case: 29 mm

5 ATM



F20325/1

**F20325**

2 -hands

Stainless steel with grey IP treatment

Case: 29 mm

5 ATM

MADEMOISELLE



F20320/1

**F20320**



F20320/2

2-hands

Stainless steel with gold /rose IP treatment

Case: 29 mm

5 ATM



F20321/1

**F20321**

2-hands

Stainless steel with gold IP treatment

Case: 29 mm

5 ATM



F20322/1

**F20322**

2-hands

Stainless steel with rose gold IP treatment

Case: 29 mm

5 ATM

BOYFRIEND



F20206/1

**F20206**



F20206/2

Multifunction  
Stainless steel  
Case: 35 mm  
5 ATM



F20207 /1

**F20207**



F20207/2

Multifunction  
Stainless steel with gold / rose IP treatment  
Case: 35 mm  
5 ATM



F20208/1

**F20208**



F20208/2

3 - Hands  
Stainless steel  
Case: 31 mm  
5 ATM



BOYFRIEND



F20209/1

**F20209**



F20209/2

3 - Hands  
 Stainless steel with gold / rose IP treatment  
 Case: 31 mm  
 5 ATM



F20210/1

**F20210**

3 - Hands  
 Stainless steel with gold IP treatment  
 Case: 31 mm  
 5 ATM



F20211/1

**F20211**

3 - Hands  
 Stainless steel with rose IP treatment  
 Case: 31 mm  
 5 ATM

BOYFRIEND

FALL  
2017



F16925/A

**F16925**



F16925/B

3 - Hands  
Stainless steel  
Case: 33.50 mm  
5 ATM

FALL  
2017



F16926/A

**F16926**



F16926 /B

3 - Hands  
Stainless steel with rose IP treatment  
Case: 33.50 mm  
5 ATM

FALL  
2017



F16927/A

**F16927**

3 - Hands  
Stainless steel with blue IP treatment  
Case: 33.50 mm  
5 ATM

BOYFRIEND

FALL  
2017



F16928/A

**F16928**

3 - Hands  
Stainless steel with purple rose IP treatment  
Case: 33.50 mm  
5 ATM

FALL  
2017



F16929/A

**F16929**

3 - Hands  
Stainless steel  
Case: 33.50 mm  
5 ATM  
Leather strap



F16929/B

FALL  
2017



F16930/B

**F16930**

3 - Hands  
Stainless steel with rose gold IP treatment  
Stainless steel  
Case: 33.50 mm  
5 ATM  
Leather strap

BOYFRIEND

FALL  
2017



F16931/B

**F16931**

---

3 - Hands

---

Stainless steel with blue IP treatment

---

Case: 33.50 mm

---

5 ATM

---

Leather strap

---

FALL  
2017



F16965/3

**F16965**



F16965/4

---

3-hands

---

Stainless steel

---

Case: 32 mm

---

5 ATM

---

TIME TO LIVE



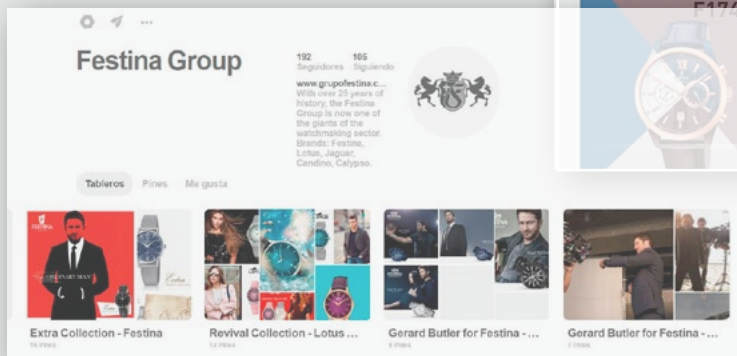
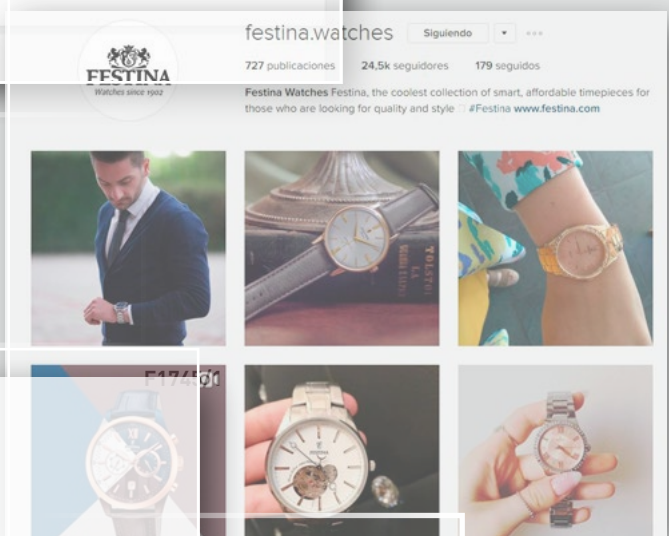
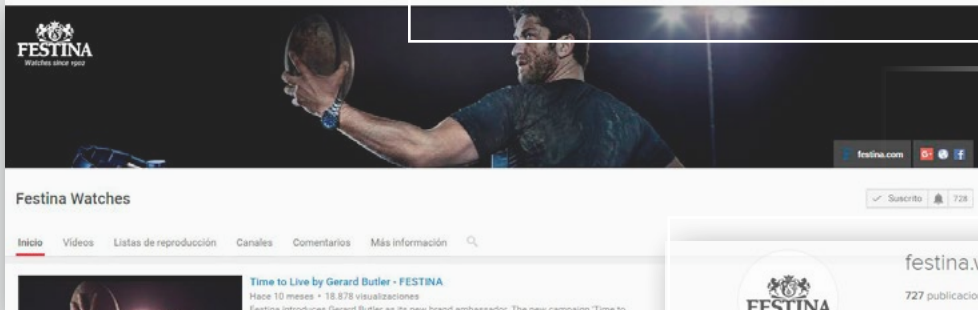
MISS FRANCE



**CHRONO BIKE**  
WITH RICHARD VIRENQUE

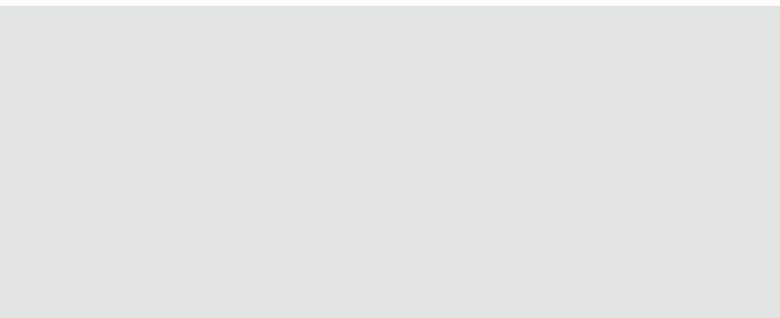


If you are interested in opening a local page on social networks, please contact the headquarters beforehand.











## **FEXP015/XXL**

Display Extra Large 2015

Closed: \*W 68 cm - H 64 cm - D 37 cm

Opened: \*W 96 cm - H 64 cm - D 37 cm



## **FEXP015/B**

Display Big 2015

Closed: \*W 64 cm - H 40 cm - D 37 cm

Opened: \*W 86 cm - H 40 cm - D 37 cm



## **FEXP015/M**

Display Medium 2015

Closed: \*W 48 cm - H 40 cm - D 37 cm

Opened: \*W 68 cm - H 40 cm - D 37 cm

\* W: Width - H: Height - D: Depth



## FEXP015/S

Display Small 2015

\*W 38 cm - H 34 cm - D 35 cm



## FEXP015/C

Display Extra Large 2011

Closed: \*W 38 cm - H 22 cm - D 33 cm

Opened: \*W 54 cm - H 15 cm - D 33 cm



## FEXP\_EXTRA

Display Box for 28 watches

Closed: \* W 45 cm - H 27 cm - D 27,9 cm

Opened: \* W 45 cm - H 27 cm - D 55 cm

\* W: Width - H: Height - D: Depth



## F56

Chrono Bike 2017

\* W 13 cm - H 8,7 cm - D 12,6 cm



## F57

Chrono Bike 2017

\* W 17,9 cm - H 8,7 cm - D 16,2 cm



## F52

Prestige Collection

\* W 10,5 cm - H 9 cm - D 12,6 cm



## F53

Extra Collection

\* W 26,4 cm - H 3 cm - D 6,4 cm



## F54

Extra Collection

\* W 10,5 cm - H 5,2 cm - D 11 cm

\* W: Width - H: Height - D: Depth



**F17**

**Junior Collection**

\* W 11 cm - H 11 cm - D 8,6 cm



**F24**

**Pink Box Set**

\* W 14,5 cm - H 6 cm - D 10,7 cm



**F37**

**Generic**

\* W 11,5 cm - H 9,3 cm - D 11,5 cm

\* W: Width - H: Height - D: Depth



MADemoiselle	PRESTIGE CHRONObIKE / CHRONO	MULTIFUNCTION
BOYFRIEND		RETRO



Your **FESTINA** watch is guaranteed for a 24 month period against any manufacturer's defect under the following conditions: any part found by our technical service to be defective as a result of a manufacturing fault will be replaced free of charge by **FESTINA**.

## THE FESTINA INTERNATIONAL GUARANTEE DOES NOT COVER

Damage resulting from accidents, mishandling or abusive use (knocks, dents, crushing, etc.), the use of batteries other than those specified by **FESTINA**, unauthorized alteration, manipulation or repair, or the consequences of the normal wear and ageing of the watch.

Also not included are straps and bracelets.

In order to benefit from this guarantee, you will be required to present this **FESTINA** International guarantee certificate, duly completed, dated, stamped and signed by an approved **FESTINA** dealer.

Please keep this certificate in a safe place.

**Caution: Your watch has a quartz movement.**

The guarantee will not be valid if batteries other than those specified by **FESTINA** have been used.

## EXAMPLES OF USE



### **3 ATM / 30 Meters**

Resistant to accidental contacts with water, such as rainwater splash.



### **5 ATM / 50 Meters**

Resistant to all water sports, except diving.



### **10 ATM / 100 Meters**

Resistant to all water sports, including shallow diving. An annual service of the sealing mechanism should be carried out.



### **20 ATM / 200 Meters**

Resistant even for diving with use of oxygen bottles. An annual service of the sealing mechanism should be carried out.